

Community-Centered Safety in Rural Areas (Los Angeles and Ventura Counties)

August 3, 2021

11:00 am – 12:30 p.m.

www.scag.ca.gov

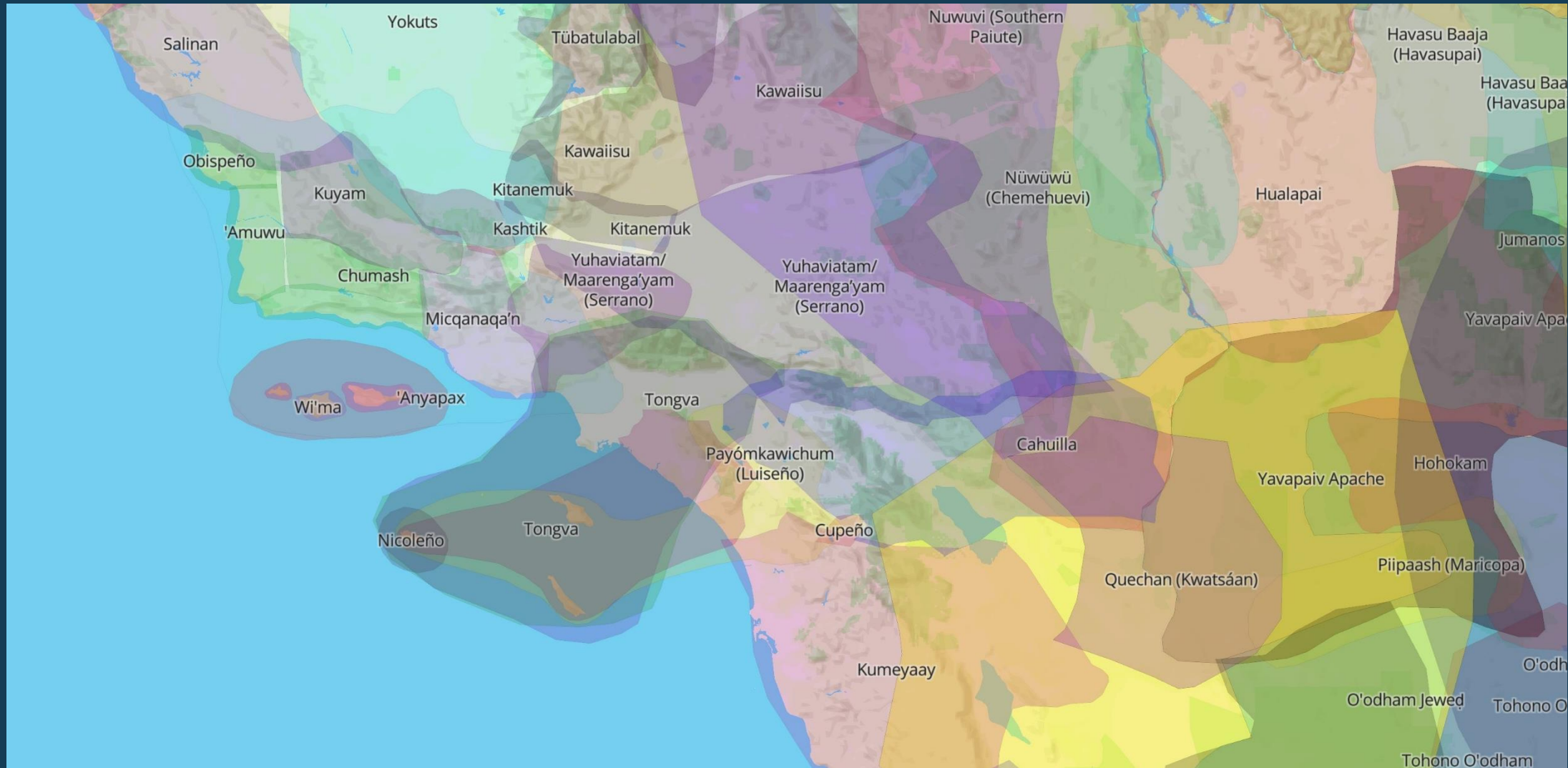


Meeting Logistics



1. Webinar length: approximately 1.5 hours
2. Please take care to mute your audio/phones
3. At the end of the presentations, there will be a Q&A session followed by a facilitated group discussion
4. If you have a question during a presentation, type it into the chat box, or raise your hand and we will call on you after the presentation is finished
5. Think of something later? Email aguirre@scag.ca.gov or the presenter
6. All presentations will be emailed to those who registered to participate in today's webinar

Land Acknowledgement



Presentations



Presentation #1: Overview of Regional Conditions, *Go Human* Campaign

Courtney Aguirre, SCAG

Presentation #2: Human Centered Safety in the City of Lancaster

Rosa Orellana, City of Lancaster

Presentation #3: Traffic Safety Requests in Rural Communities

Alvin Ly, Los Angeles County Public Works

Presentation #4: Transportation Equity in Rural Communities

Lucas Zucker, Central Coast Alliance United for a Sustainable Economy

Overview of Regional Conditions & *Go Human* Campaign

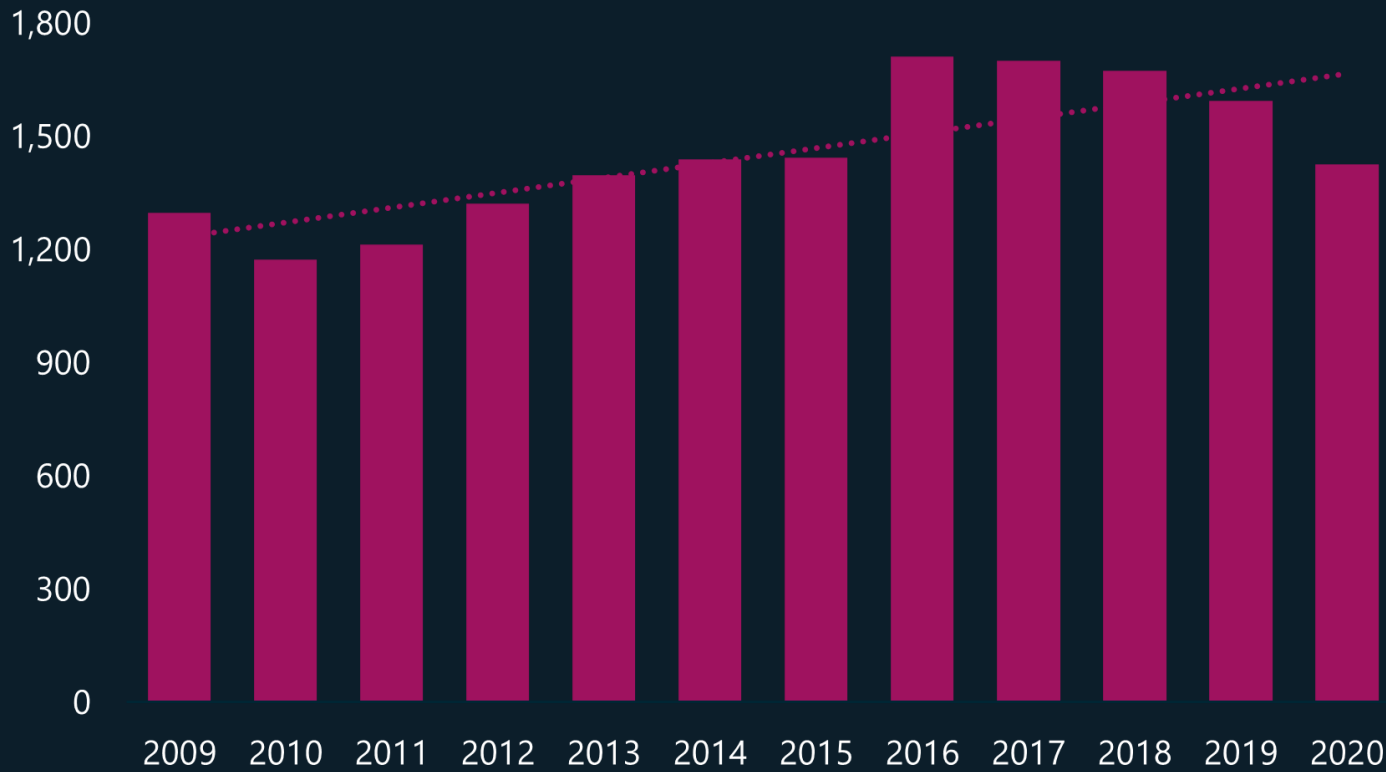
Summer 2021

www.scag.ca.gov



What are the overall trends?

SCAG Region Total Number of Fatal Victims



1,450
PEOPLE DIE EVERY YEAR FROM COLLISIONS

5,500
PEOPLE SUSTAIN SERIOUS INJURIES EVERY YEAR FROM COLLISIONS

77%
OF ALL COLLISIONS OCCUR IN URBAN AREAS

Why are collisions occurring?

One of the top contributing factors of all collisions is unsafe speed.

Speed is the critical factor in the severity of collisions.

HIT BY A VEHICLE TRAVELING AT 25 MPH
89% chance of survival.

HIT BY A VEHICLE TRAVELING AT 35 MPH
68% chance of survival.

HIT BY A VEHICLE TRAVELING AT 40 MPH
35% chance of survival.

Arriving Home Safe

The State of Transportation Safety in the Southern California Region

Southern California Association of Governments | June 8, 2021

Visit scag.ca.gov/transportation-safety for all county-specific factsheets, a Story Map, the Transportation Safety Regional Existing Conditions Report, and more.



Go Human Active Transportation Safety & Encouragement Campaign



Co-Branding & Regional Advertising Campaign



Temporary Safety Demonstrations & Programming (Kit of Parts)



Safety Workshops, Webinars, and Technical Assistance



SCAG's *Go Human* Traffic Safety Peer Exchanges



Traffic Safety Peer Exchanges Events



Tuesday, July 13, 1 p.m.

Human-Centered Safety in Rural Communities
(Imperial, Riverside, & San Bernardino Counties)

Thursday, July 15, 11 a.m.

Traffic Safety in the City: Centering Equity & Access
(Orange, Riverside, & San Bernardino County)

Tuesday, July 20, 1 p.m.

Traffic Safety in Suburbia: Serving All Ages
(Ventura & Los Angeles Counties)

Friday, July 23, 1:15 p.m.

Reimagining Community Safety

Thursday, July 29, 1 p.m.

Traffic Safety in Suburbia: Serving All Ages
(Orange, Riverside, & San Bernardino Counties)

Tuesday, August 3, 11 a.m.

Human-Centered Safety in Rural Communities
(Ventura & Los Angeles Counties)

Tuesday, August 10, 1 p.m.

Traffic Safety in the City: Centering Equity and Access
(Los Angeles County)



Visit gohumansocal.org to register and sign up for the *Go Human* newsletter

Follow *Go Human* on socials @GoHumanSoCal

Zoom Poll Questions



- 1. Do you live, work, or play in a rural Los Angeles or Ventura County (Y/N)?**
- 2. Do you feel that the needs of vulnerable populations such as pedestrians, bicyclists, and aging road users are adequately addressed in these rural areas(Y/N)?**

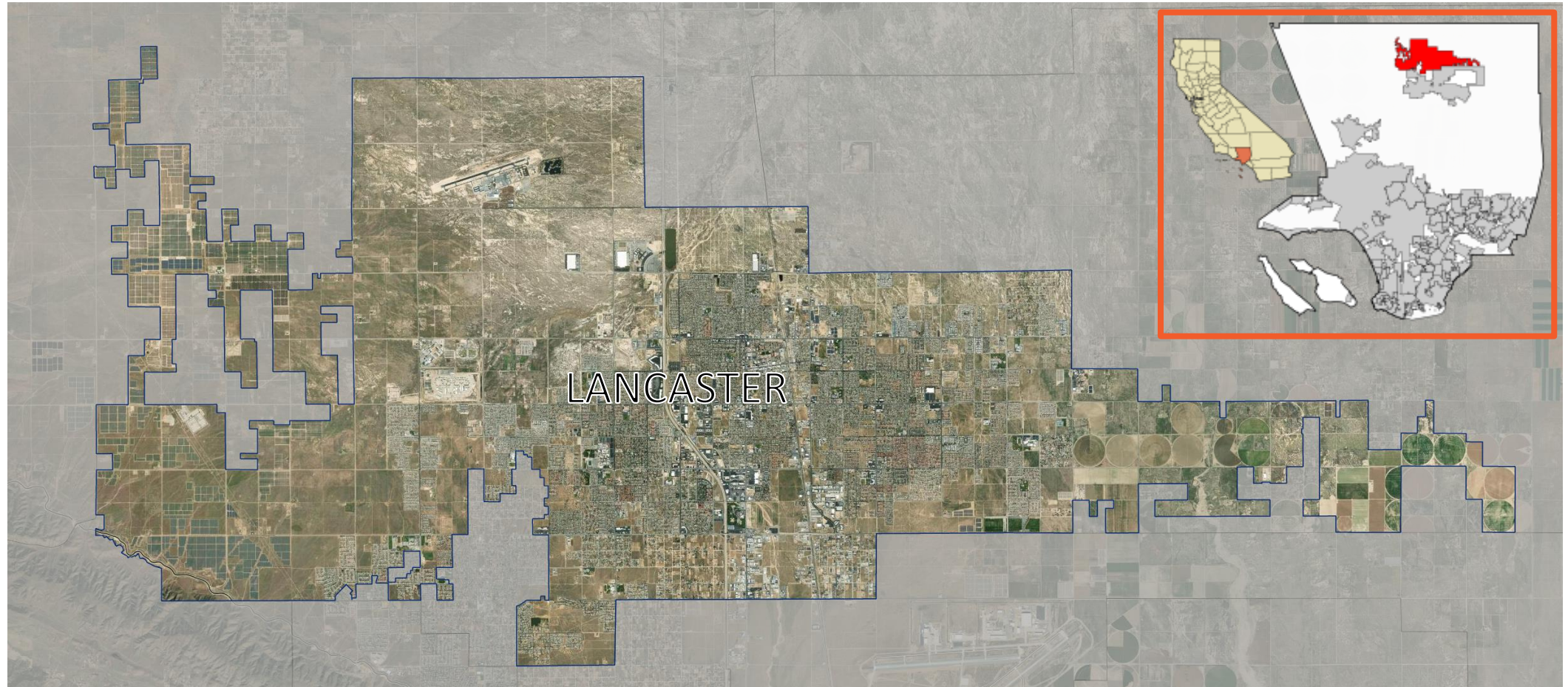
Human –Centered Safety in Rural Communities

CITY OF LANCASTER

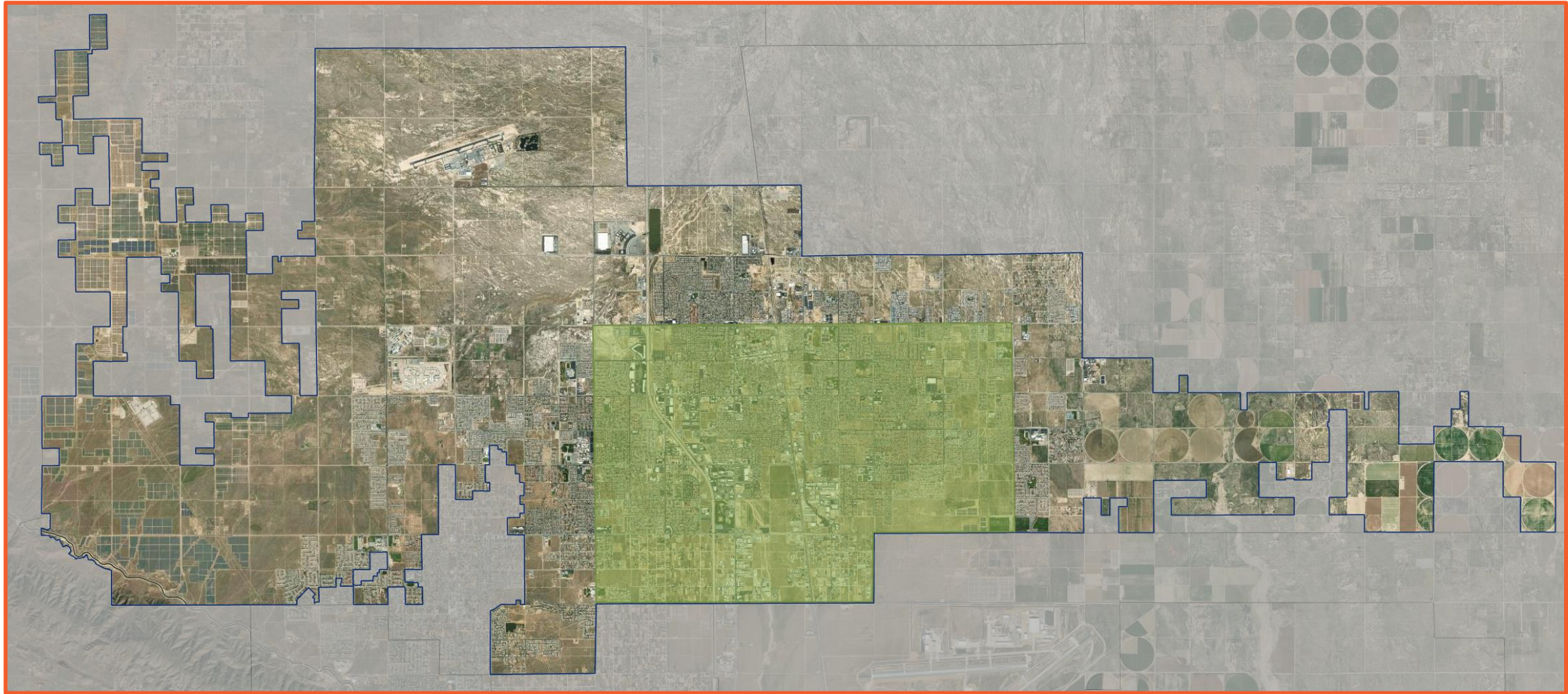


Creating a better tomorrow. *Together.*

Where is the City of Lancaster?



Urban vs Rural



Demographics

1. 75% of the community is disadvantaged
2. Median Household Income: \$49,000
3. 32 ft of paved road per capita



Challenges

1. Transitions between Urban and Rural Areas
2. Open/wide roads creating high speeds
3. Pedestrian/Bicyclist accident rate on high speed roads
4. Misjudging oncoming traffic at signalized intersections
5. Underdeveloped locations that disrupt connectivity



Transition from Urban to Rural



Sample of our 6 lane roads

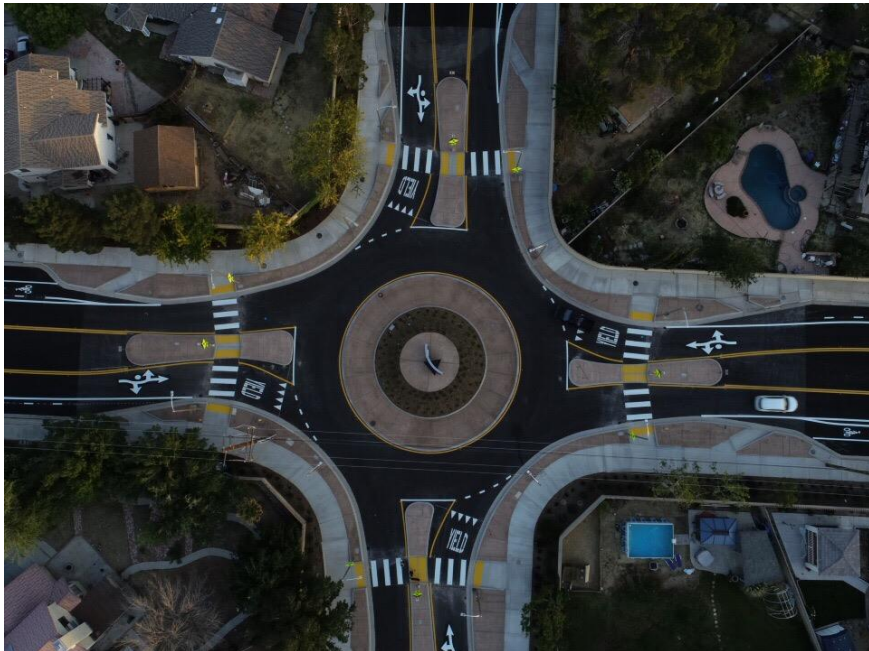
Annual Maintenance Programs

- The Annual Thermoplastic Refresh Program is a 5-year rotating program that refreshes existing and installs new thermoplastic striping throughout the City.
- The Pavement Management Program (PMP) reviews the pavement index and prioritizes roadways that have failing pavement.



Multimodal Safety

Roundabouts



Separated and Buffered Bike Lanes



High Visibility Crosswalks & Curb Radii Reduction

Complete Streets Mentality

Lancaster Boulevard

Before

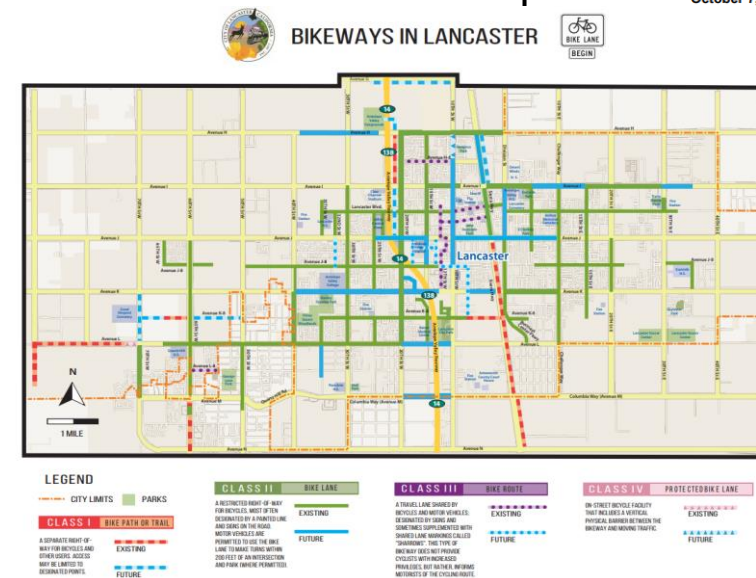
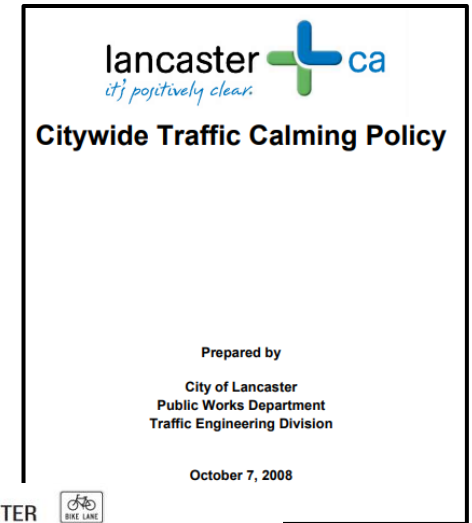


Lancaster Boulevard

AFTER

Internal Implementation

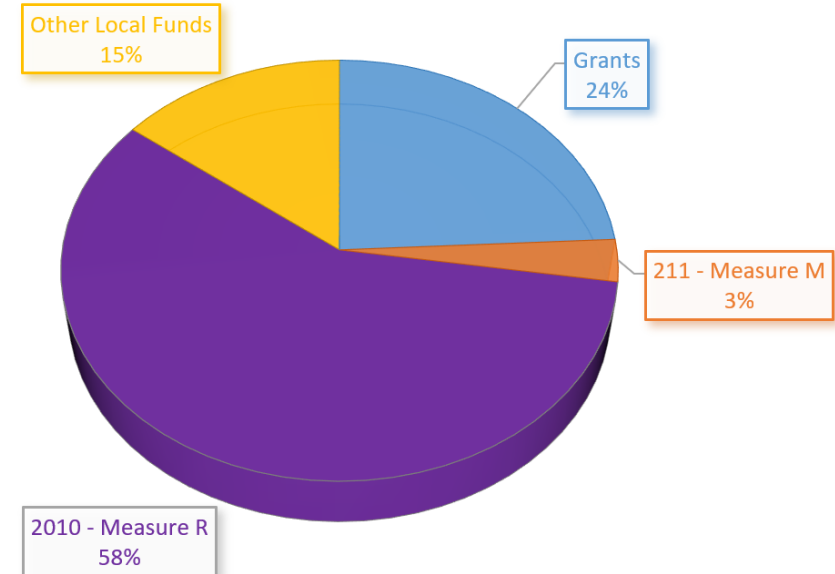
- Refreshing our Traffic Policies
 - Traffic Calming Policy Refresh
 - Safe Routes to School Refresh
 - City Standards and Maps Refresh
- Creating processes that are both effective and efficient



Major Funding Sources

- Measure R
- Measure M
- HSIP/ATP
- Other Grants

TRAFFIC PROJECTS BY FUNDING SOURCE



New Challenges with HSIP Funding

- New LRSP Required
- City of Lancaster Goals
 - Create a systemic approach with LRSP
 - Be able to utilize the LRSP for internal funding allocation
 - Ongoing analysis for future applications.

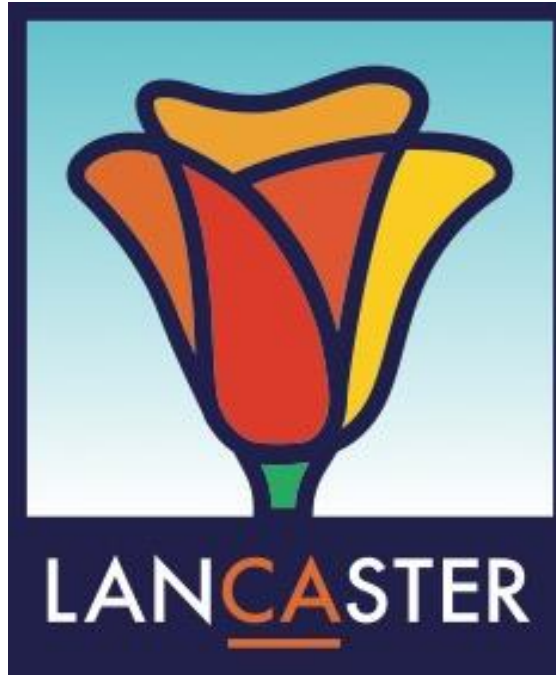


Community Education and Engagement



- Tour De Luke
- See and Be Seen
- Bike Repair Clinics
- Scavenger Hunt





Rosa Orellana
Traffic Engineering
rorellana@cityoflancasterca.org
661-723-5805

Thank you

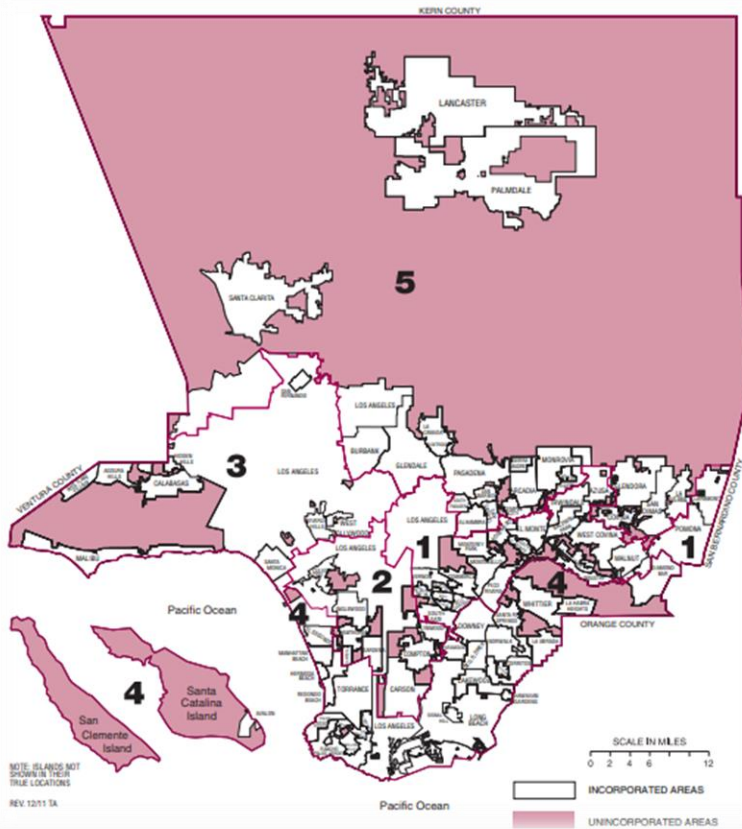


Traffic Safety Requests In Rural Communities

Alvin Ly

Los Angeles County Public Works

Los Angeles County Public Works



- Our Mission: To deliver regional infrastructure and services improving the quality of life for more than 10 million people in the Los Angeles County.
- Los Angeles County has 120 unincorporated communities outside of the 88 incorporated cities.
- County Board of Supervisors act as the governing body and provide municipal services to the unincorporated areas.

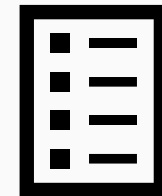
Types of Safety Requests

- Stop Control
- Traffic Signal
- Speeding Concerns
- Warning Signs
- Parking Restrictions
- Flashing Beacons
- Pedestrian and Equestrian
Marked Crossing
- Embankment Guardrail
- Illegal Dumping
- Miscellaneous requests



Typical Study Process

- ✓ Clarify Request
- ✓ Field Review/Verification of Existing Conditions
- ✓ Data Collection (Speed, Volume)
- ✓ Review Collision History
- ✓ Conduct Analysis
- ✓ Prepare Traffic Engineer Report with Recommendations/Findings
- ✓ Implement Recommended Measures



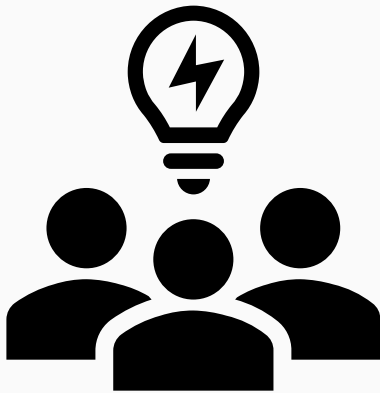
Challenges



- Local community standards
- Uncontrolled marked crossing
- Illegal dumping



Collaboration



- Local Agencies (Shared Jurisdiction)
- CHP (Speeding and Moving Violations)
- Sheriff (Parking Enforcement)
- Other Departmental Personnel

Thank You

Contact Information:

Alvin Ly

Associate Civil Engineer

aly@dpw.lacounty.gov

(626) 300 - 4772



Lucas Zucker
Policy Director
CAUSE





Transportation Equity in Rural Communities



Community Organizing Approach



- Conduct initial outreach
- Follow up to identify leaders
- Build a committee
- Show your people power
- Meet with decision-makers

Outreach Strategies



- Door-to-door canvassing
- Phonebanking
- High foot-traffic areas in key neighborhoods
- Engagement with schools
- Focus groups of underrepresented populations
- Targeted media partnerships
- Targeted social media ads



Facilitated Group Discussion

1. What did you hear today that resonates with your experience in your community?
2. What are some of the obstacles that are preventing equitable improvements to traffic safety in your community and/or in other communities?
3. What did you learn or hear today that will help you improve how traffic safety is currently addressed in your region?

SCAG's Go Human Traffic Safety Peer Exchanges Evaluation Survey:

<https://bit.ly/SCAGExchangeSurvey>

Sign up for our last session here!

<https://scag.ca.gov/traffic-safety-peer-exchange-events>

We will be posting recordings here:

<https://scag.ca.gov/go-human-safety-resources>

Contact the Project Team

SCAG

Courtney Aguirre

aguirre@scag.ca.gov

Cambridge Systematics

Jon Overman

joverman@camsys.com

For more information

<https://scag.ca.gov/go-human>

www.scag.ca.gov

