

Water & Housing in Southern California

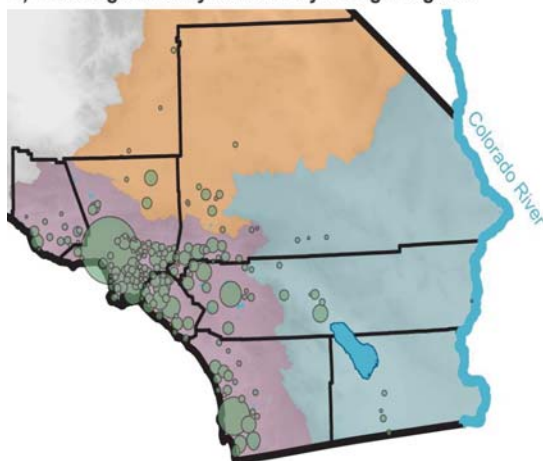
October 6, 2022

Ellen Hanak
PPIC Water Policy Center

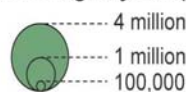


**So Cal region is home to half of all Californians.
Inland areas are growing faster, but most still live
near coast**

B) Water agencies by size and hydrologic regions

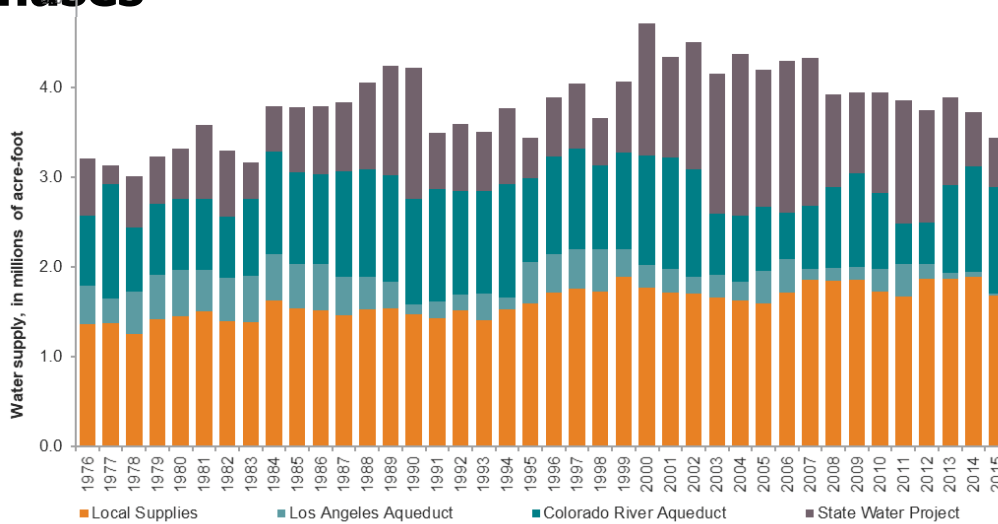


Water agency size (by population)

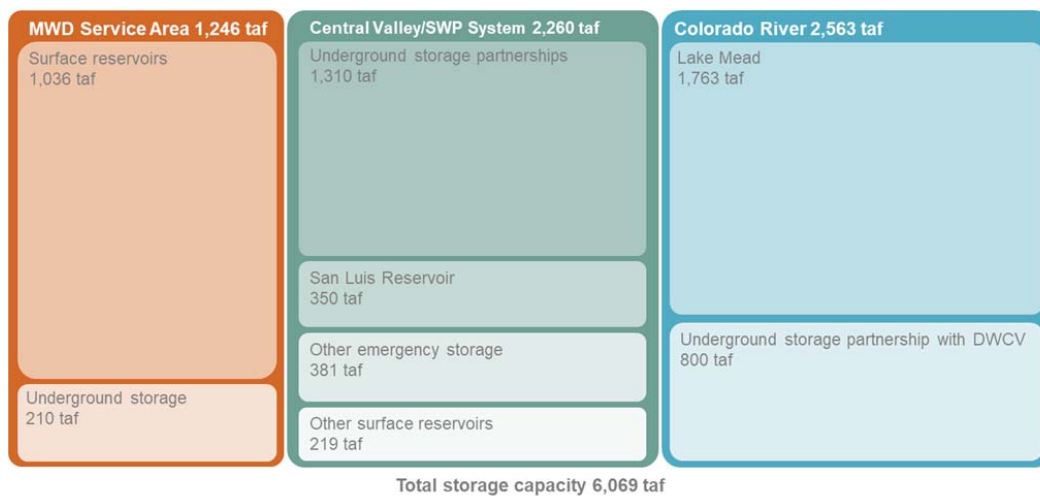


From: Escriva-Bou et al. [Water Partnerships Between Cities and Farms in So Cal and the SJ Valley](#) (PPIC 2020)

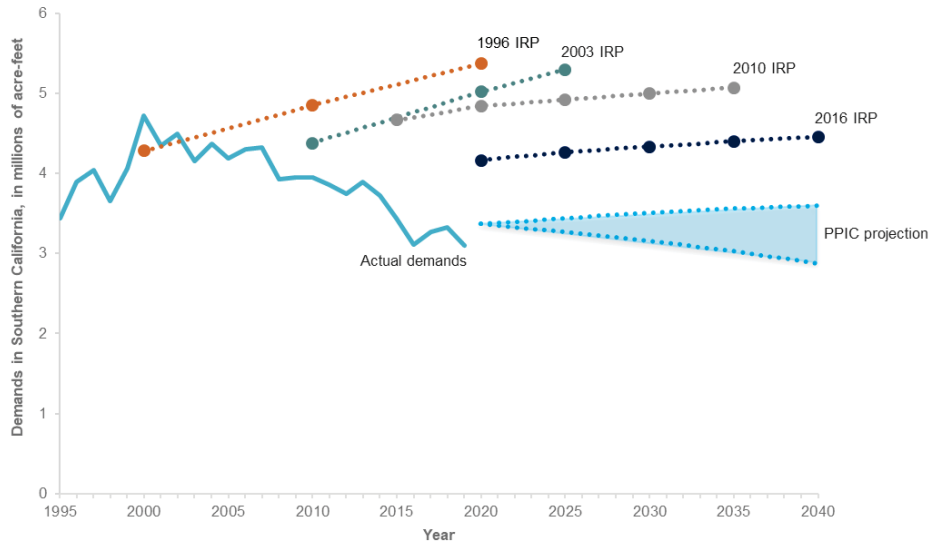
Southern California has a diverse supply portfolio, with local and imported sources—including water purchases



Since the early 1990s, region has invested massively in expanding water storage capacity

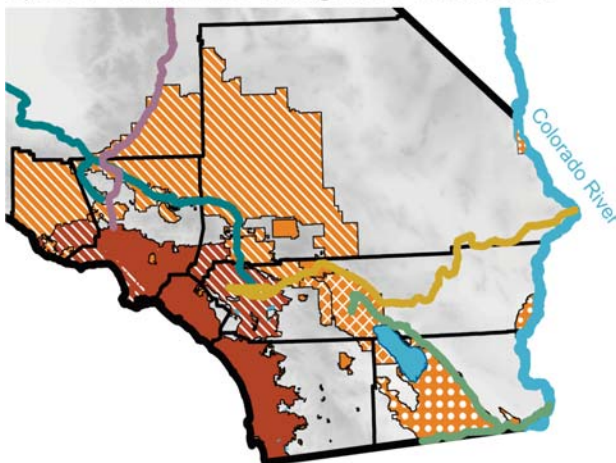


Regional demand (and demand projections) have been falling over time thanks to declining per capita use



So Cal benefits from an interconnected water grid, but some areas are not as well tied in (yet)

C) Water infrastructure and agencies' service areas



Water agency service areas

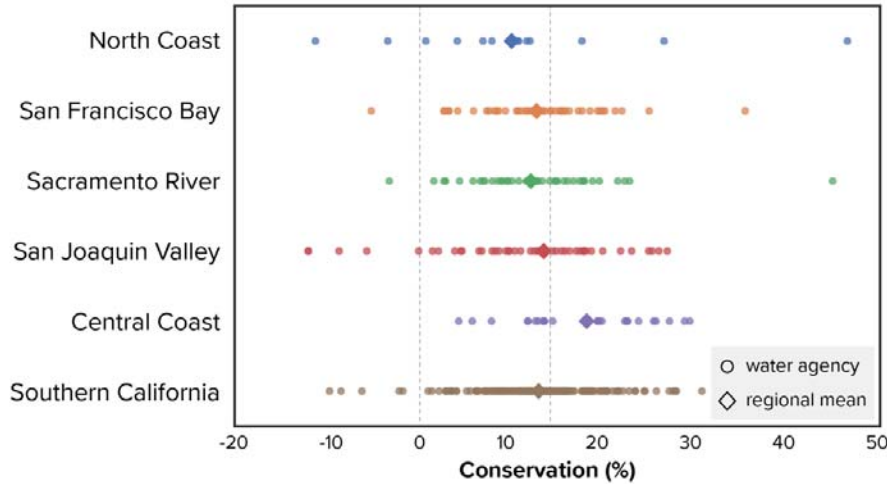
- MWD member agencies
- Agencies with SWP-only areas
- Other water districts
- SWP contractor
- SWP contractor & Colorado River user
- Colorado River user

Water infrastructure

- All-American & Coachella Canals
- California Aqueduct (SWP)
- Colorado River Aqueduct
- Los Angeles Aqueduct

Water use fell considerably during last drought, and savings persisted going into this one

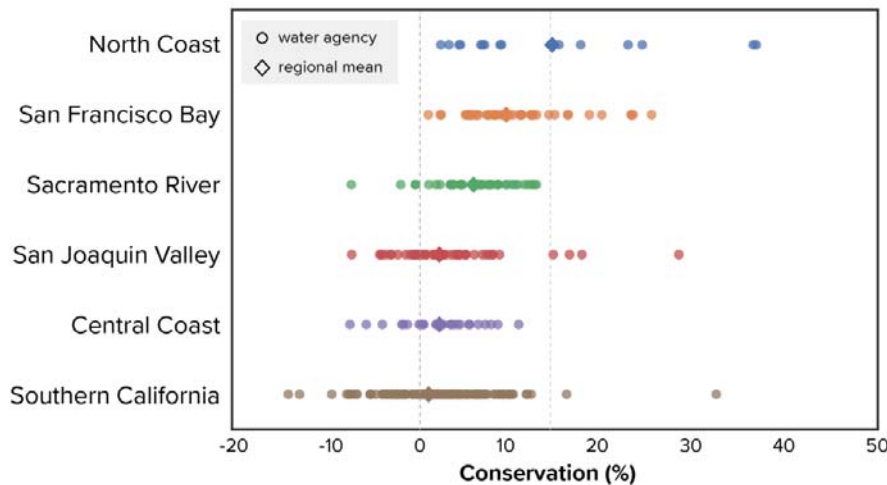
Urban agency savings between 2013 and 2020



From: Escriva-Bou et al. [Are California's Cities Conserving Enough Water?](#) (PPIC blog, 2021)

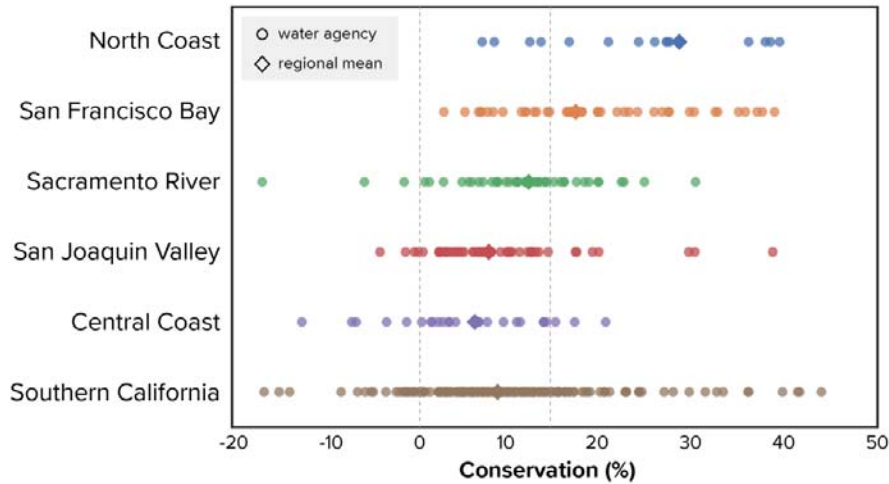
This time, cities in most regions (incl. So Cal) have not achieved level of conservation Governor is requesting

Cumulative urban agency savings since July 2021

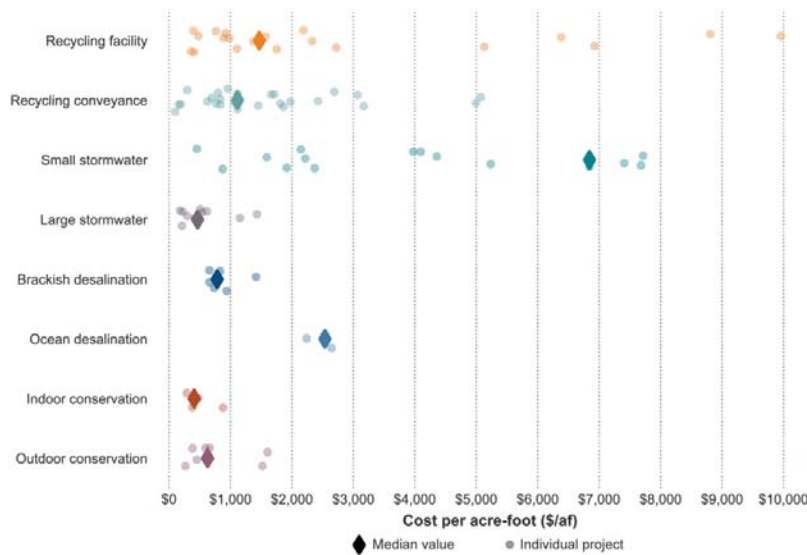


...but So Cal communities really picked up the pace this summer in response to local agency policies

Urban agency savings July 2022



Conservation, large stormwater projects, recycling most cost-effective sources of “new” water (along with trading)



What does this all mean for more housing?

- Region has strong supply portfolio, and is on a good trajectory
- Water portfolio diversification should continue to be a priority to build resilience to changing climate
- There's still potential for water savings in many communities as part of this strategy, along with supply diversification
- New homes tend to use less water, reducing demand pressures
- Connecting water and land use planning offers opportunities to push the envelope on water innovations

Thanks!



About these slides

These slides were created to accompany a presentation. They do not include full documentation of sources, data samples, methods, and interpretations. To avoid misinterpretations, please contact:

Ellen Hanak (hanak@ppic.org)

Thank you for your interest in this work.