



INDUSTRY FORUM REGIONAL UTILITIES SUPPORTING HOUSING (RUSH)

ADVISORY PANEL

April 25-28, 2023



LINKING HOUSING & INFRASTRUCTURE (RUSH)



Recommendations for SCAG intended to:

- Maximize Impact
- Address racial equity in decisions
- Be a model (climate & sustainability)
- Address SCAG Geography
- Leverage public assets & investments



ADVISORY PANELISTS



CHAIRS

- **Kelli Bernard**, Lighthouse Public Affairs
- **Alex Rose**, Continental Development

PANEL

- **Ian Adam**, Fuscoe Engineering (Water Resources)
- **Ryan Aeh**, City Ventures (Developer)
- **KeAndra Cylear Dodds**, LA Metro (Equity)
- **Mark Krebs**, PACE Water (Infrastructure)
- **Charley Wilson**, Southern California Water Coalition (Infrastructure)
- **Sherry Okun-Rudnak**, BAE Urban Economics (Finance)
- **Craig Perkins**, The Energy Coalition (Infrastructure)
- **Chuck Schilke**, Johns Hopkins University (Implementation)
- **Walker Wells**, Raimi + Associates (Sustainability)





I. CHALLENGES

INFRASTRUCTURE READINESS FOR HOUSING



- Coordinated approach to identify/tackle needs
- Integrated utility capacity and housing database
- Integrated planning at all scales

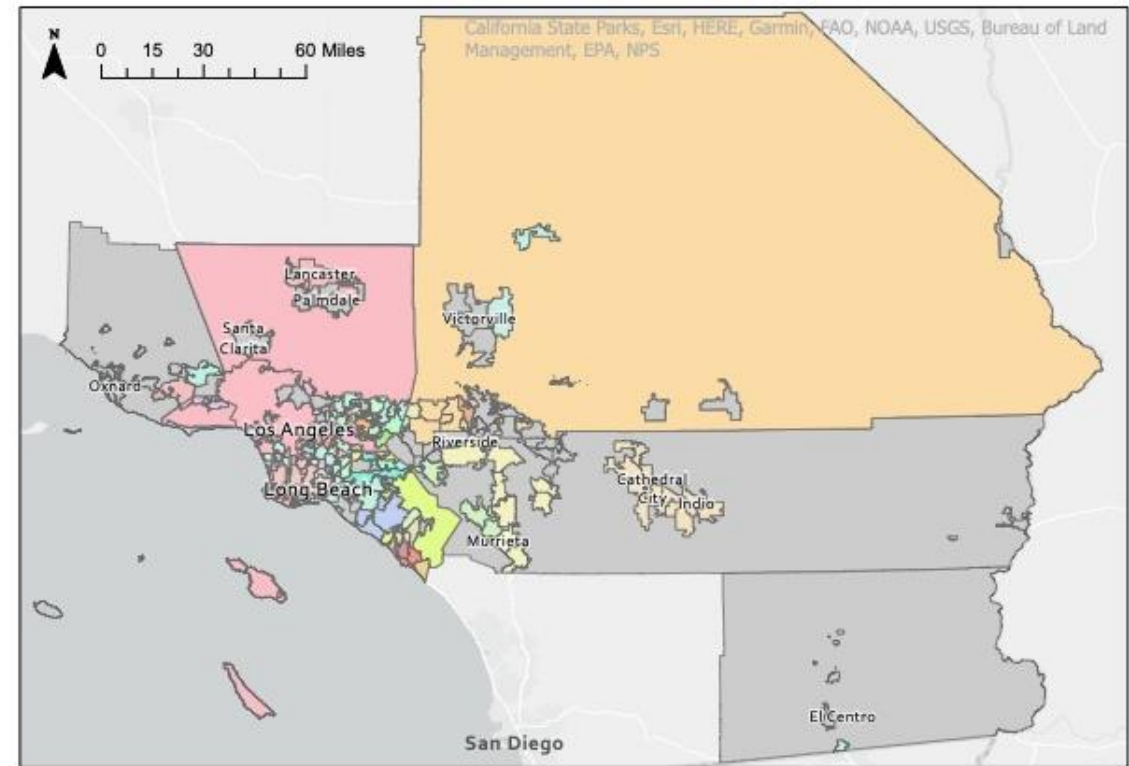


COMPLEX SYSTEM RELATIONSHIPS



- Over 400 water utilities
- Over 200 sewer utilities
- Multiple electricity providers

Water Service Retailers in the SCAG Region



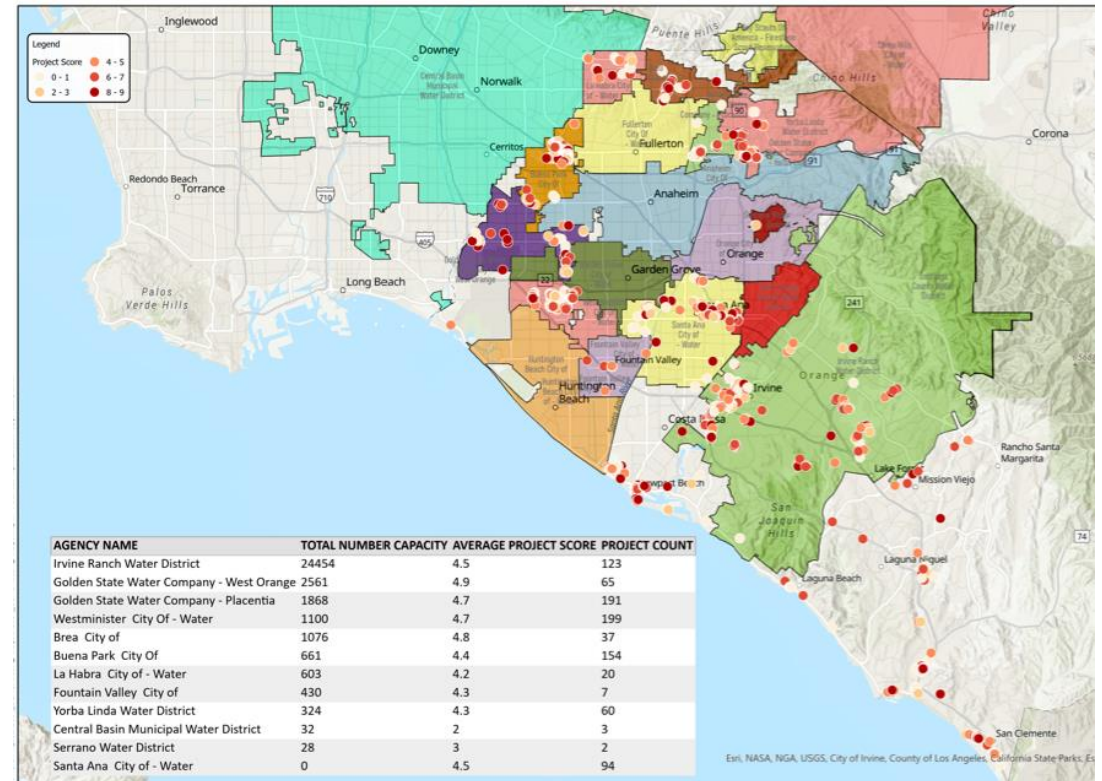
Water Service Retailers (Servicing 5+ Jurisdictions)

California Water Service	Elsinore Valley Municipal Water District	Moulton Niguel Water District	Walnut Valley Water District
Coachella Valley Water District	Golden State Water Company	San Gabriel Valley Water Company	West Valley Water District
Cucamonga Valley Water District	Invine Ranch Water District	South Coast Water District	Yorba Linda Water District
Eastern Municipal Water District	Las Virgenes Municipal Water District	Suburban Water Systems	SCAG Region
El Toro Water District	Liberty Utilities	Valley View County Water District	

SILOED & INCOMPLETE INFORMATION



- Current capacity mapping is lagging
- Limited map sharing
- Incomplete utility capacity picture
- Limited alignment with regional housing development

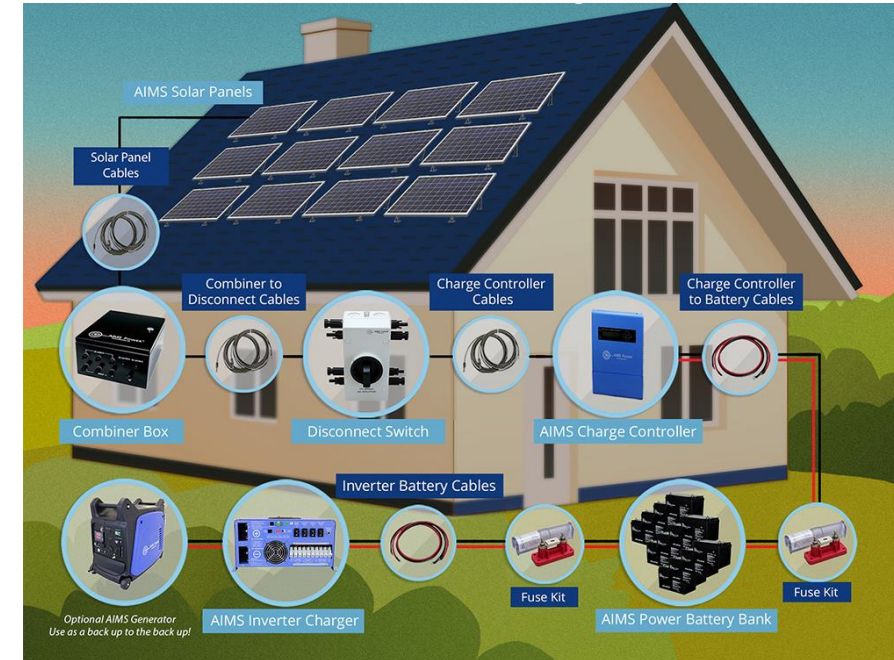




II. GOALS

PARADIGM SHIFT

- **ALIGN** housing planning and utility planning
- **ENSURE** infrastructure is housing ready
- **PRIORITIZE** equitable investment
- **SUPPORT** innovation





III. RECOMMENDATIONS

RECOMMENDATIONS

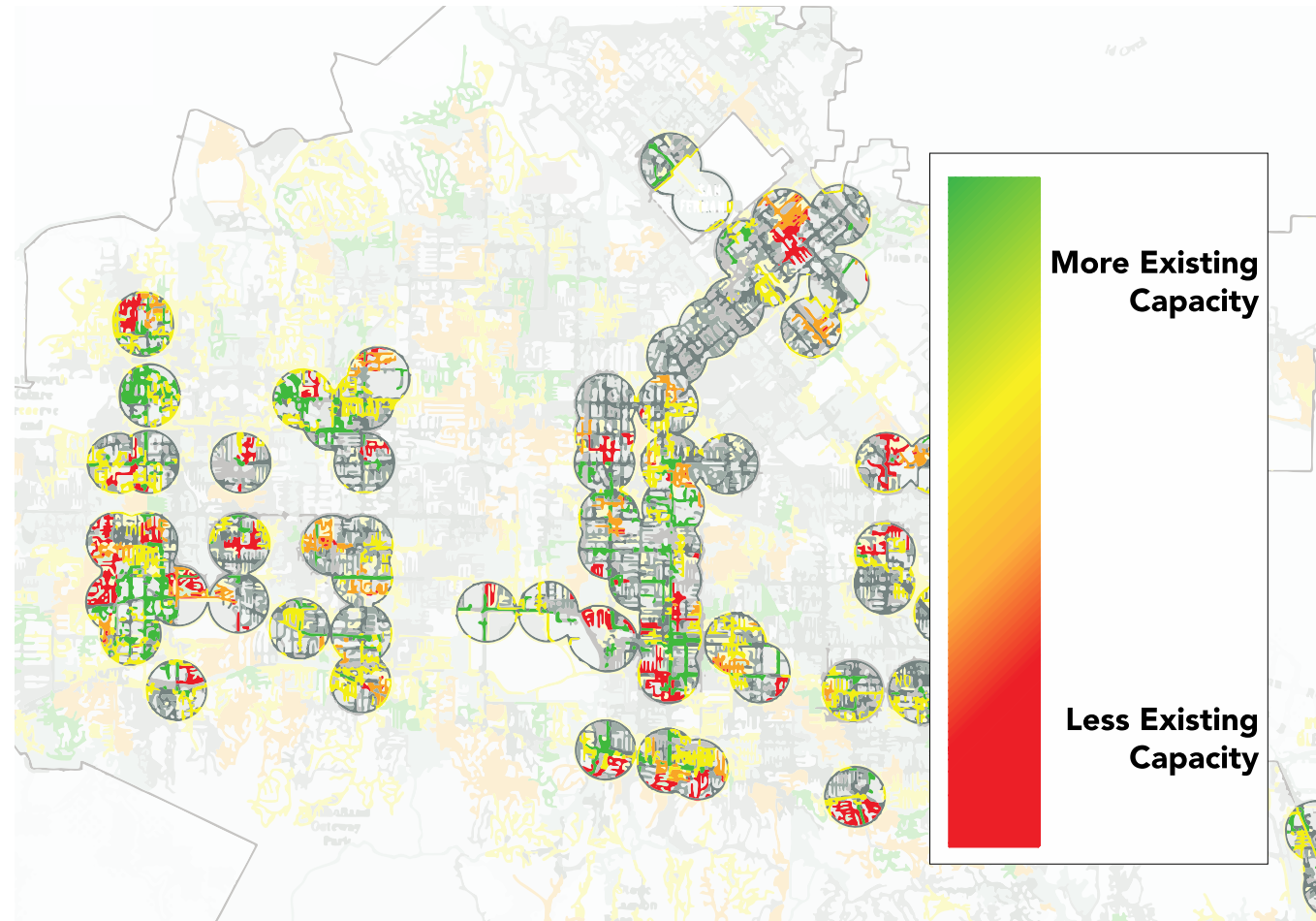


- MAPPING
- RUSH GRANTS
- COLLABORATION
- ADVOCACY



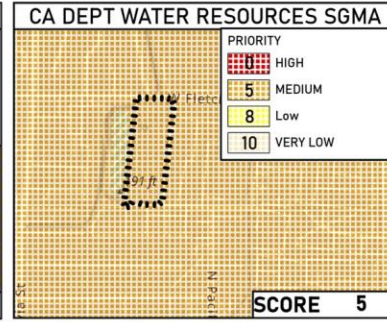
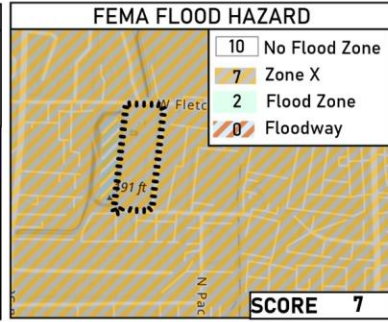
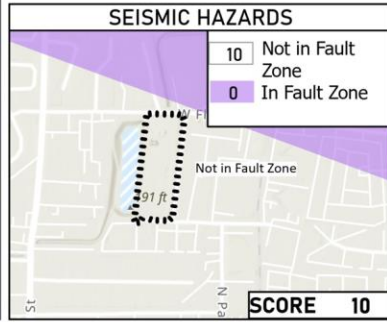
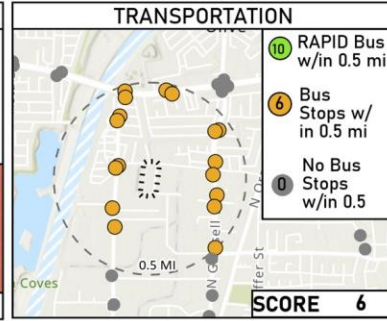
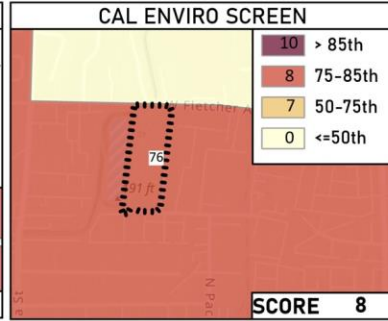
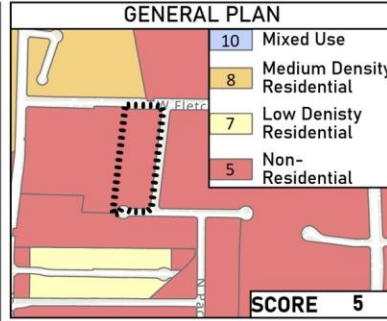
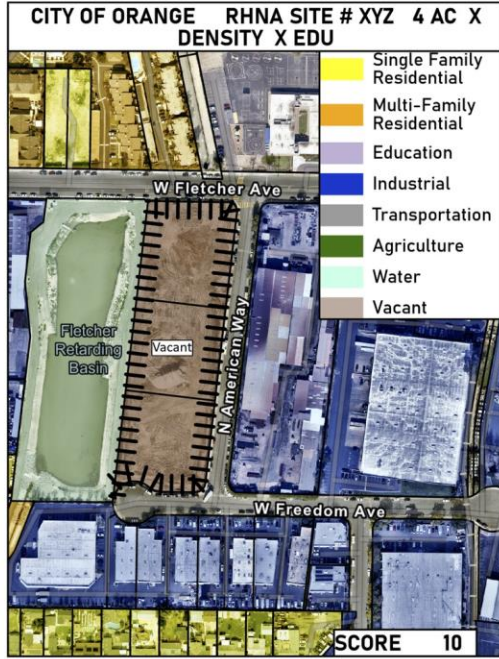
PRIORITY SITE MAPPING EXAMPLE

- Create a tool to identify opportunities and challenges



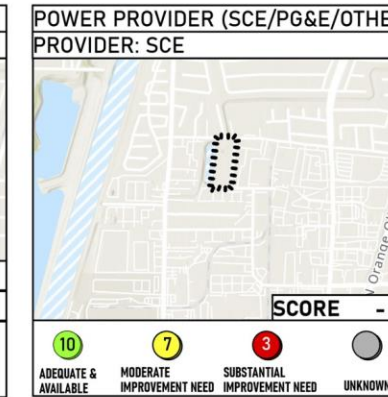
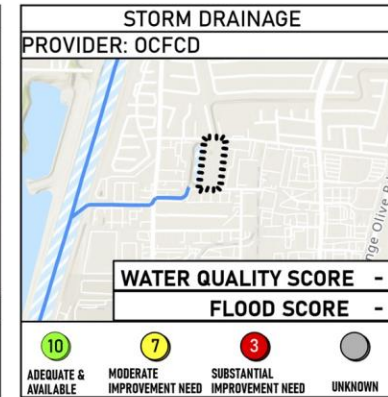
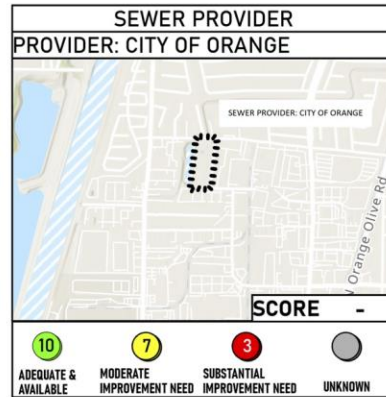
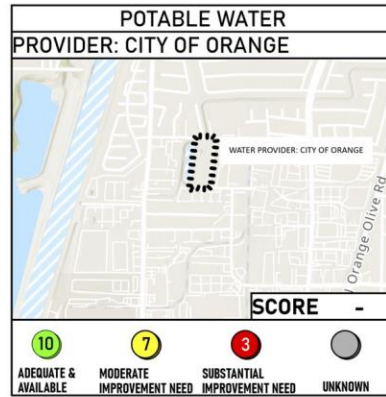
SCAG REGIONAL UTILITY SUPPORTING HOUSING (RUSH) PROJECT EVALUATION DATA AND MATRIX

PHASE 1 EVALUATION



PHASE 1 SCORING MATRIX				
APN(S)	374-63-205, 374-63-207, 374-63-208			
PLANNING				
CRITERIA	DESCRIPTION	WEIGHT	SCORE	WEIGHT SCORE
EXISTING LAND USE	Vacant	20%	10	2
ZONING	General Plan: Light Industrial	15%	5	0.75
ENVIROSCREEN SCORE	76th Percentile	20%	8	1.6
TRANSPORTATION				
Bus Stops	19 stops - 900' nearest	20%	6	1.2
CONSTRAINTS				
FEMA FLOOD HAZARD	Zone X, Protected by Levee	10%	7	0.7
SEISMIC HAZARD	Not within Hazard Zone	10%	10	1
WATER RESOURCES	Groundwater Priority: Medium	5%	5	0.25
PHASE 1 SCORE		100%	51	7.5

PHASE 2 EVALUATION



PHASE 1 & 2 SCORING MATRIX				
PHASE 2 SCORING MATRIX				
INFRASTRUCTURE	CRITERIA	DESCRIPTION	WEIGHTS	WEIGHTED SCORE
POTABLE		Purveyor: City of Orange		
SEWER		Purveyor: City of Orange		
DRAINAGE		Purveyor: City of Orange/County		
ELECTRICAL		SCE		
BROADBAND		Spectrum		
PHASE 2 SCORE				X
PHASE 1 SCORE				7.5
TOTAL SCORE				X

WHAT ARE WE SOLVING FOR



GREEN LIGHT PROJECT
UTILITY(IES) AVAILABLE



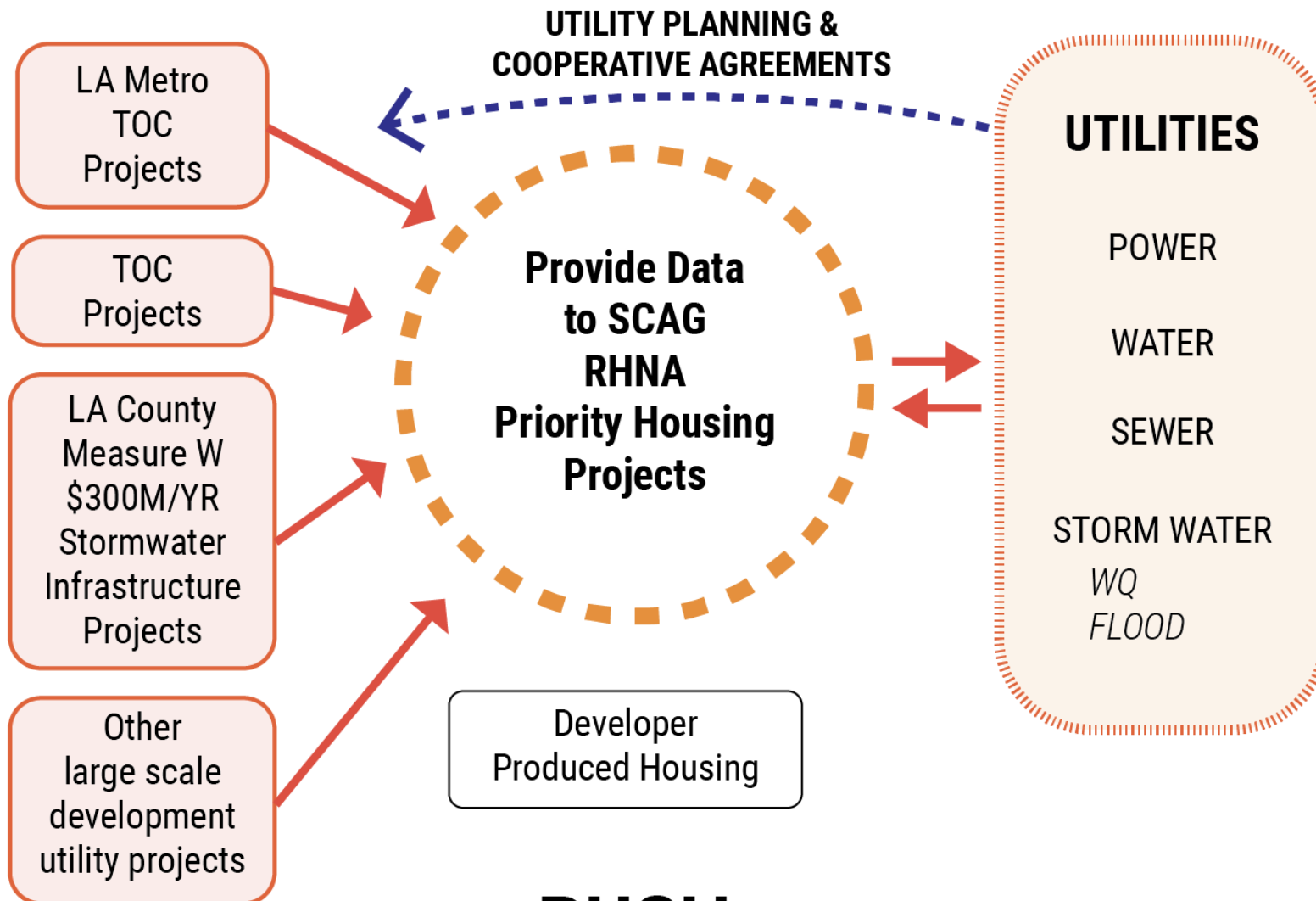
SCAG
RHNA #'s
Priority Projects
By Utility Service Area

UTILITY AGENCY
(Prioritized)
Utility Service
Capacity Deficiency



RED LIGHT PROJECT
ADDRESS SPECIFIC
UTILITY DEFICIENCY





UTILITY PLANNING &
COOPERATIVE AGREEMENTS

UTILITIES

POWER

WATER

SEWER

STORM WATER

WQ

FLOOD

Provide Data
to SCAG
RHNA
Priority Housing
Projects

Developer
Produced Housing

RUSH

(REGIONAL UTILITIES SUPPORTIVE HOUSING)

RUSH GRANT PROJECTS



- Planning for infrastructure improvements to serve new housing
- Capital funding to solve capacity issues
- Innovation pilot projects
- Coordination projects

Innovation includes:

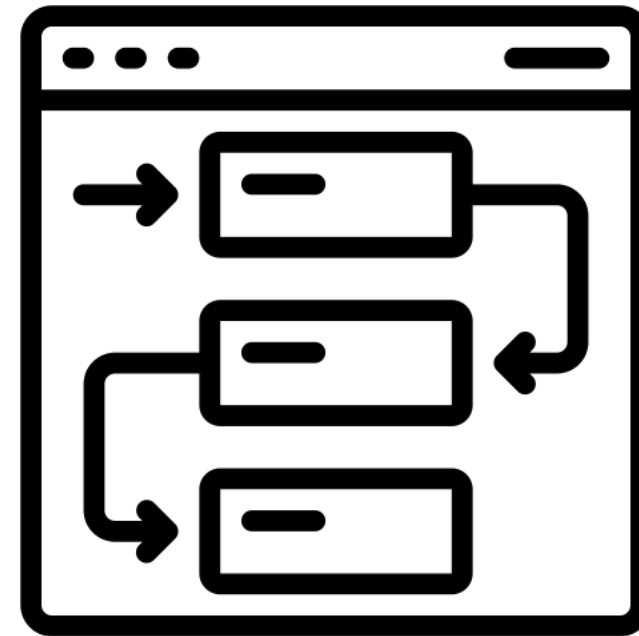
- *Net Zero Design*
- *Demand Management*
- *Battery Storage*
- *Microgrids*
- *Distributed Stormwater*
- *Greywater*
- *Climate Resilience*



GRANT RECIPIENT PRIORITIES



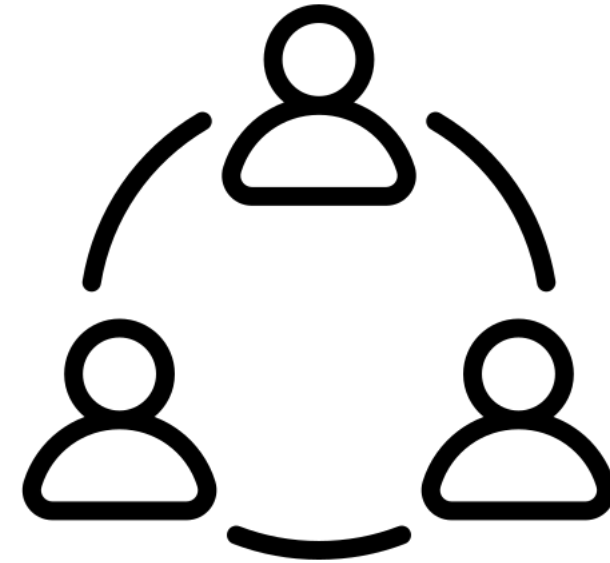
- Equity lens
- Within area of need
- Addresses multiple issues
- Leverages other funding
- Coordination/Alignment



FACILITATE COLLABORATION



- New partnerships to tackle infrastructure problems
- Utilities and jurisdictions
- Subregions/COGS
- Data & Funding Clearinghouse



LEVERAGE RESOURCES



- Federal, state, local funding
- Dig once
- Multi-agency collaboration
- Reduces inefficiencies and costs



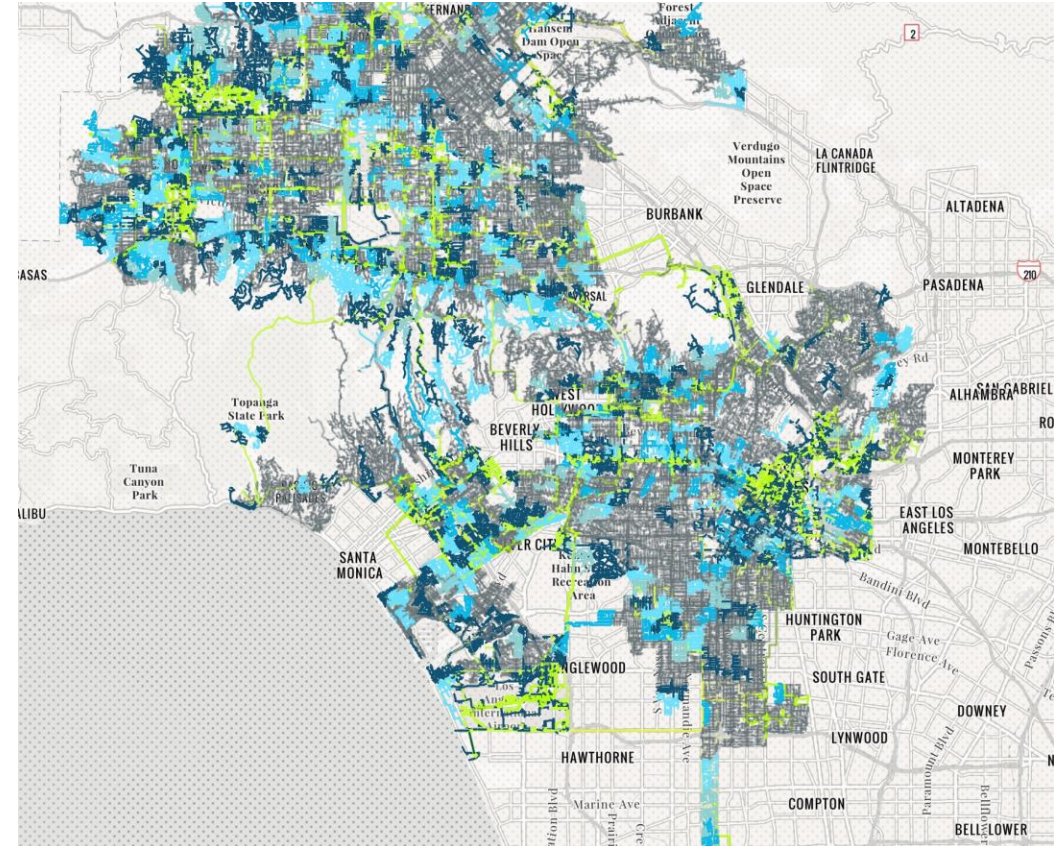
WEST SANTA ANA BRANCH EXAMPLE



ADVOCACY



- State/CPUC Policy Change
- Workforce Development
- Equity/Anti-Displacement
- Facilitate larger advocacy groups



(COURTESY LADWP)





III. SUMMARY

SUMMARY



- **SCAG's Role**
- **Regional Alignment**
- **Equitable and Resilient Housing**

